



中國地質大學
CHINA UNIVERSITY OF GEOSCIENCES
北京 · BEIJING

Progress in Integrated Geophysical Research on the Sagaing Fault

Presenter: Dr.Liu Zhen

China University of Geosciences Beijing

2026.4.4

Report Outline

1

Research Background

2

Research Content

3

Current Progress

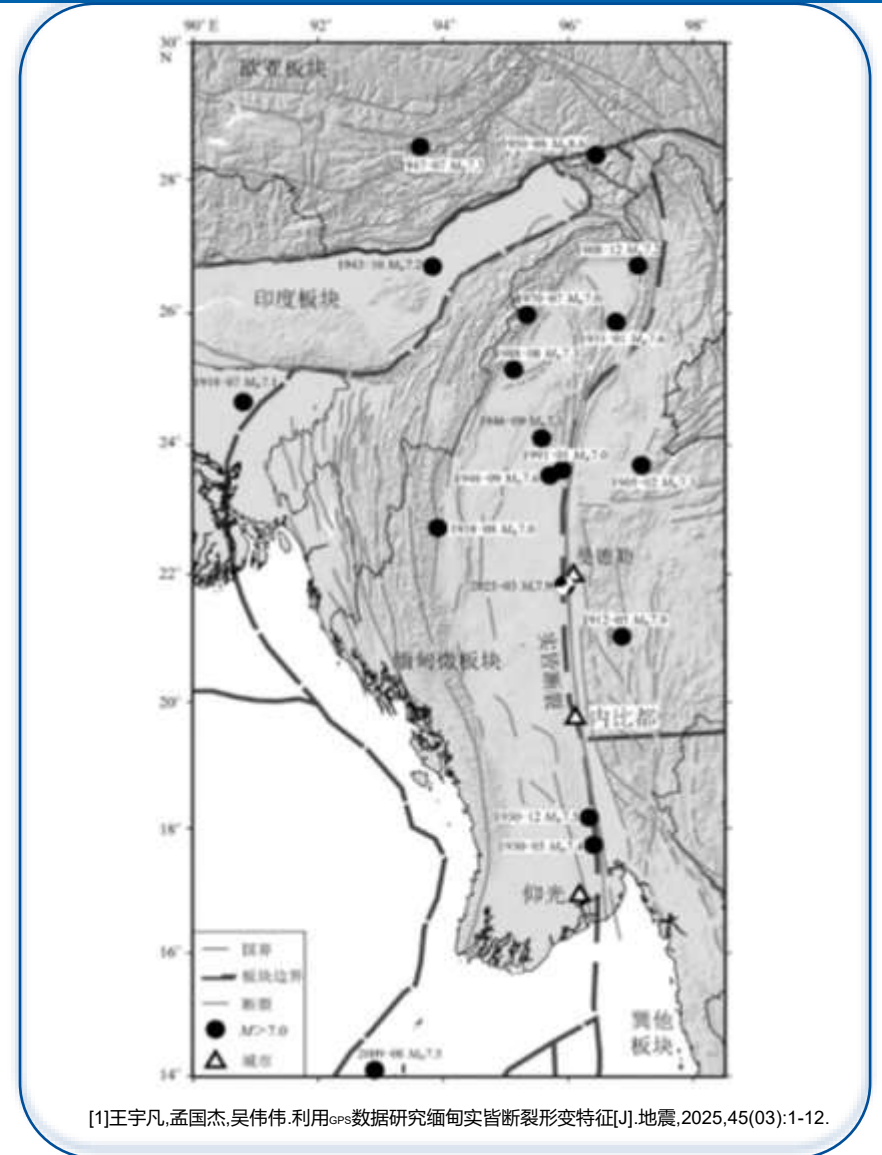
4

Further Research Plan

Research Background

Research Background and Significance

- The Sagaing Fault is a major dextral strike-slip boundary between the Myanmar and Sunda plates.
- Researching this fault provides a critical scientific basis for seismic disaster mitigation in high-density urban centers such as Mandalay, Naypyidaw and Yangon.



Research Content

Multi-parameter Characterization of a Fault Zone: Integrating Active/Passive Seismic and Magnetotellurics for Comprehensive Subsurface Geophysical Field Research



SMARTSOLO IGU-16 1c

- Ambient Noise
- Reflection Seismology
- Guided Waves



SMARTSOLO IGU-16 3c

- 3D 3-Component Array



DEM-R07-C5

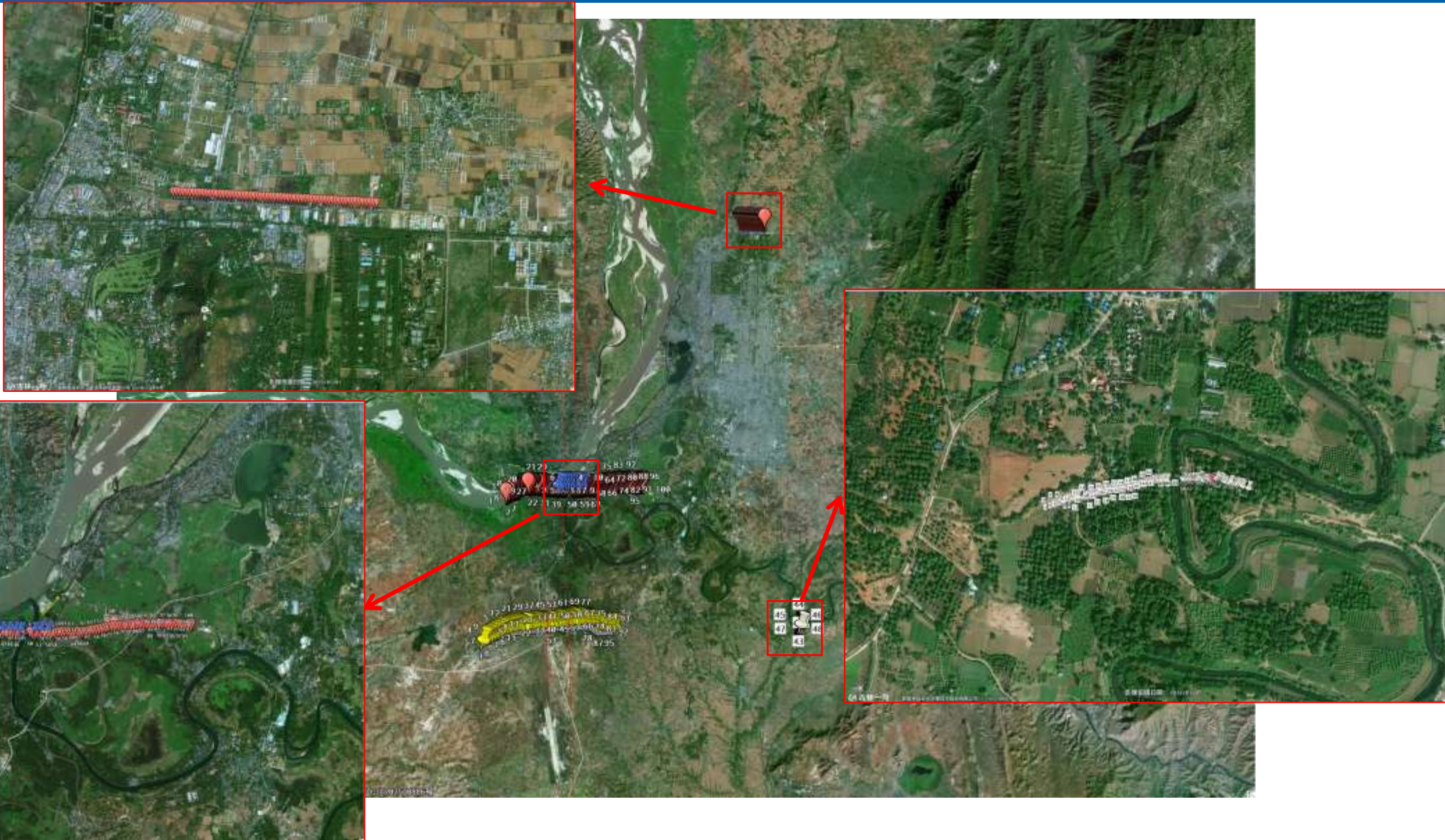
- MT
- AMT

Current Progress



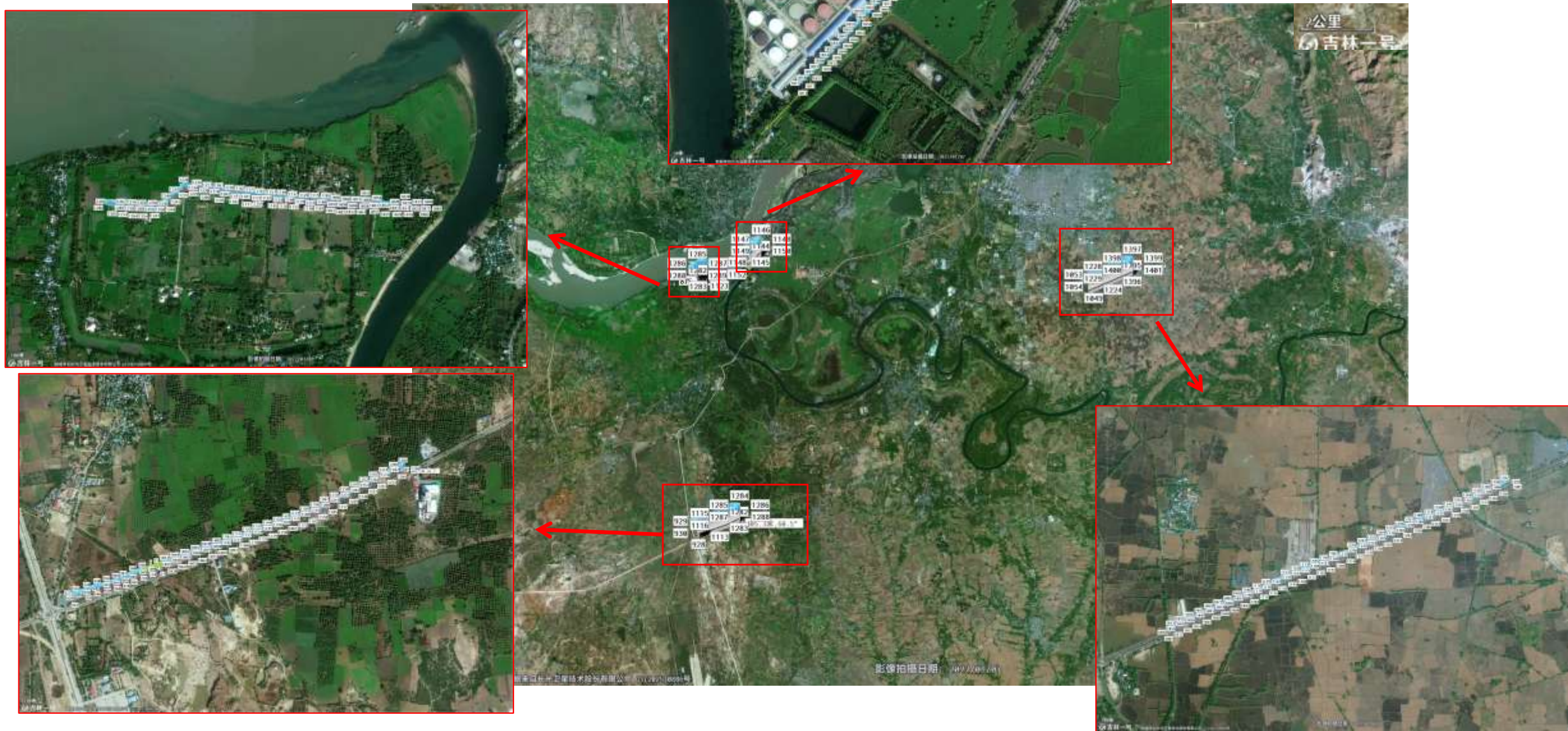
Current Progress

- Ambient Noise &
- Guided Waves



Further Research Plan

■ Reflection Seismology



Current Progress

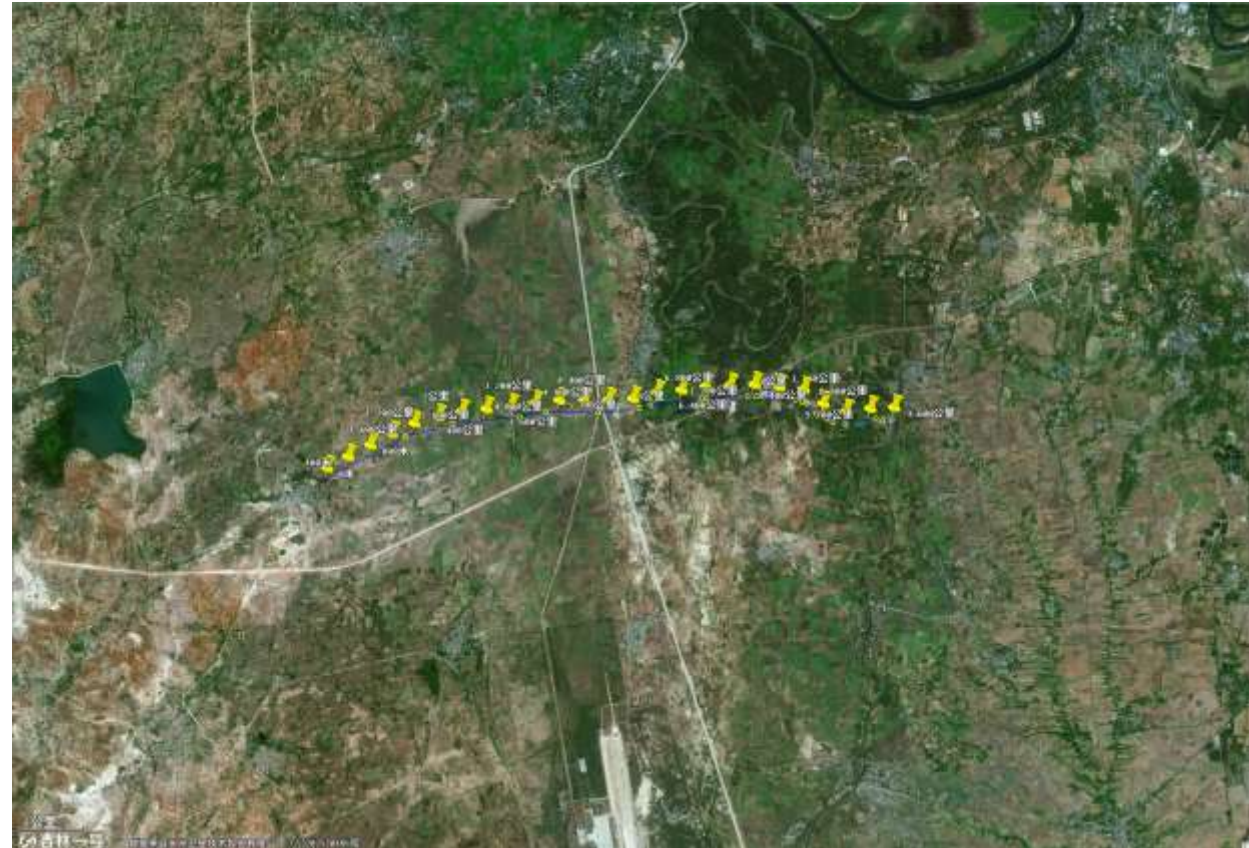
■ 3D 3-Component Array



Current Progress

■ MT

■ AMT



Method	Point Spacing	Line Length
AMT	400m	9.6km
MT	2000m	20km

Further Research Plan

Integrated Data Processing & Multi-Physics Joint Imaging

- **Multi-Source Seismic Data Integration**
- **Structural-Constrained MT Inversion**
- **Seismic Wavefield Synthesis & Guided Wave Modeling**

Thank you!

